



333 Bayview Avenue
Amityville, New York 11701
For Sales and Repairs, (800) 645-9445
For Technical Service, (800) 645-9440
Publicly traded on NASDAQ Symbol: NSSC

© NAPCO 2009

NAPCO iSeeVideo™ Internet Connection Guide

01/09

This guide documents the basic Internet requirements and connection configurations for the following iSeeVideo IP video products:

ISEE-VCAM1
ISEE-VCMPPT
ISEE-SCHGW

Internet Connection Upload Speed

The iSeeVideo system requires a broadband internet connection at the camera site, which may be provided by a cable modem, DSL modem, satellite modem or a network connection in a commercial application. There are many different grades of services, with varying upstream speeds, which will determine the frame rate and performance of the installation. iSeeVideo is compatible with all of the above connections, however the minimum acceptable upstream connection speed is 256 KBPS (Kilobits per second). While most DSL and cable services will provide more than enough upstream speed for the iSeeVideo connection, low cost DSL and satellite services should be checked to ensure that they meet the basic requirements. This can be easily verified at the subscriber's computer (connected to their broadband modem) by using one of the free internet speed test utilities, such as <http://www.speedtest.net/> or http://reviews.cnet.com/7004-7254_7-0.html.

Following is a table of typical Internet connection speeds:

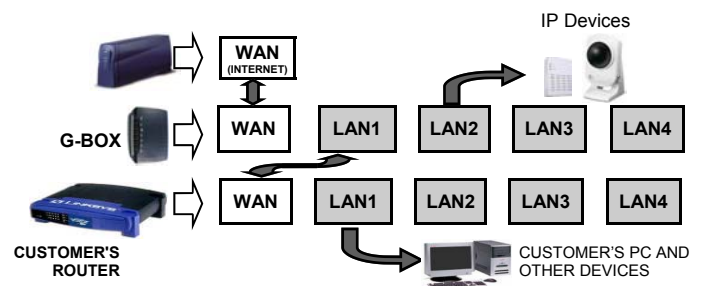
Connection Speed	Connection Type
28.8 Kbps	Dial-up 28.8k
33.6 Kbps	Dial-up 33.6k
53.3 Kbps	Dial-up 56k
128 Kbps	DSL Lite
256 Kbps	Minimum Speed for V-CAM IP Series Installation
384.0 Kbps	DSL/Cable 384k
768.0 Kbps	DSL/Cable 768k
1500.0 Kbps	Cable/DSL 1.5Mbps
1544.0 Kbps	Full T1 1.544Mbps

WIRING THE NETWORK CONNECTION

Cable Modem Service Installation

The use of the optional G-BOX in Cable Broadband service applications is highly recommended to provide optimum frame rate and resolution performance. Follow the installation and connection steps below:

- 1 Power down Cable Modem and Router
- 2 Wire G-BOX in standard configuration as shown (G-BOX WAN to Modem WAN)
- 3 Wait 15 minutes and power up Cable Modem.
- 4 Wait 1 minute and power up G-BOX, then Customer's Router and video devices.
- 5 Test local PC for Internet connectivity (open internet browser and browse internet).
- 6 Go to www.VideoAlert.net and click NEW ACTIVATION to activate account.

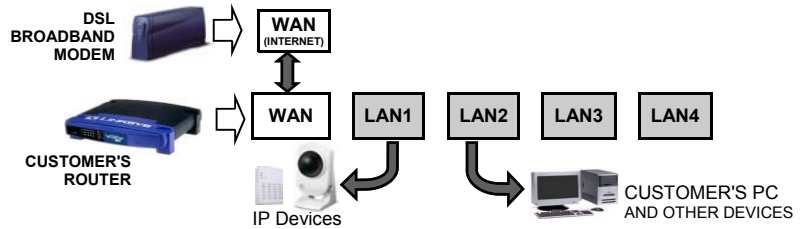


- ① Some ISP providers lock onto the MAC address of the first device after the modem. Powering down the modem for 15 minutes will force the ISP to recognize the new MAC address of the G-BOX upon power up.

NOTE: If no G-BOX is available, the Cable installation may be wired in same configuration as DSL Modem, below.

DSL Broadband Modem Installation

- 1 Power down DSL Modem and Router.
- 2 Wire as shown
- 3 Wait 15 minutes and power up Modem.
- 4 Wait 1 minute and power up Customer's Router and video devices.
- 5 Go to www.VideoAlert.net and click NEW ACTIVATION to activate account.



ISP Type cannot be identified

In some commercial applications, it may not be possible to identify the type of ISP, or identify the modem or routers that may be in front of the internet connection provided by the subscriber. In these cases, wire as shown below.

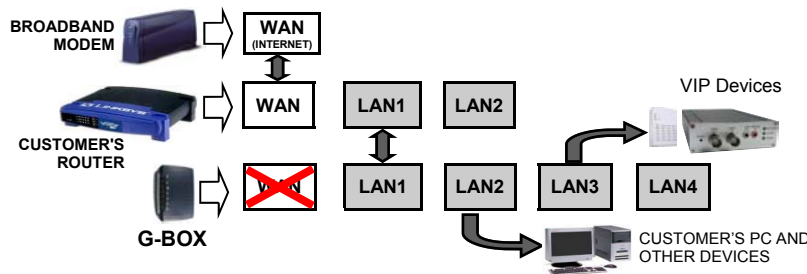
- 1 Connect the VIP devices directly into the network connection as shown (typically an network RJ45 jack connected to a router) This corresponding port on the router must provide access to the internet.
- 2 Power up the video device.
- 3 Go to www.VideoAlert.net and click NEW ACTIVATION to activate account.



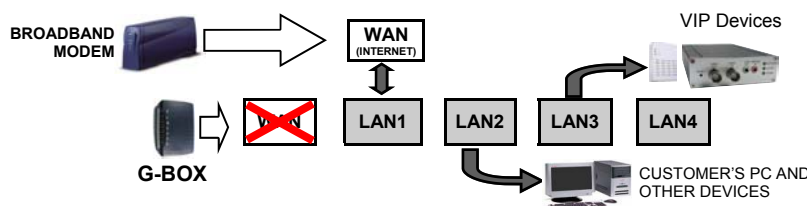
- ⓘ This configuration should work for virtually all commercial installations. If there is no Internet connectivity, there may be an enterprise class router and firewall blocking the network jack from the outside internet connection. This connection can be completed by asking the IT professional to open this port to the internet.

NOTE: If additional ports are required, the G-BOX may be used as a switch

- 1 Power down all devices to be connected to the G-BOX
- 2 Connect the devices to the G-BOX LAN ports as shown.
- 3 Power up all devices, wait one minute, power down and then up again to ensure proper switch operation.



Adding ports to an existing router



Adding iSeeVideo devices to a system that does not have a router